

Fujitsu recommends Windows 10 Pro for business.

Data Sheet

FUJITSU Notebook LIFEBOOK A3510

Your Everyday Partner

The FUJITSU Notebook LIFEBOOK A3510 delivers the right balance of essential business features offering a slim and light design for daily computing tasks at home or in the office. Its 39.6 cm (15.6-inch) outdoor-friendly anti-glare HD and FHD display offers a comfortable viewing for daily routines. The textured cover combines professional looks with enhanced scratch resistance for everyday use. Convenient data entry is ensured with the num pad.

Powerful performance for everyday tasks

Made to power your work day

- up to 10th generation Intel® Core™ i5 processor and fast DDR4 memory

Rich choice of interfaces

Connect to your external monitor, the network or your headset with ease. The SD card slot allows you to extend the storage capacity or simply transfer data and pictures to your notebook

- HDMI, LAN and Audio port, SD card slot

Everyday security

Keep your data highly secure and protect yourself against virus attacks and other security threats

- Integrated BIOS and TPM 2.0 functionality (Intel® Platform Trust Technology)

Reliable connectivity

Enjoy smoother video streaming and data transfer with a better coverage away from the router

- Intel® WLAN ac supporting Intel® Wireless Display technology, Bluetooth 5.0 low Energy
- ODD for reading and backing up files on CDs and DVDs



Components

Base unit	LIFEBOOK A3510
Operating systems	
Operating system pre-installed	Windows 10 Pro. Fujitsu recommends Windows 10 Pro for business. Windows 10 Home
	*Processor only for retail, SMB, education and government
Processor	Intel® Core™ i5-1035G1 up to 3.6GHz * Intel® Core™ i3-1005G1 up to 3.4GHz *
Memory	4 GB DDR4-3200 8 GB DDR4-3200 16 GB DDR4-3200
Storage disk drives	SSD 256 GB PCIe NVMe M.2 2280 SSD 512 GB PCIe NVMe M.2 2280 SSD 1 TB PCIe NVMe M.2 2280
Hard disk drives	HDD 500 GB 5.4k SATA III
LCD Display	HD : 1366 x 768 anti-glare - brightness: 220 cd/m ² FHD: 1920 x 1080 - anti-glare - brightness: 250 cd/m ²
Multimedia	
Camera	Built-in webcam (HD) with Status LED
Camera notes	0.92 megapixels

Base unit

Base unit	LIFEBOOK A3510
General system information	
Chipset	Integrated in CPU
Supported capacity RAM (min.)	4 GB
Supported capacity RAM (max.)	32 GB
Memory slots	2
Memory notes	Dual channel support
LAN	10/100/1,000 MBit/s Realtek RTL8111H
Integrated WLAN	Intel® Dual Band Wireless-AC9560 11ac with integrated Bluetooth 5.0
BIOS features	InsydeH2O BIOS
Audio type	On board
Audio codec	Realtek ALC255
Audio features	2x built-in speakers (stereo), Sound volume control via function key (down: Fn+F8; up: Fn+F9)
Color	Black
Material	Matt
Display	
Display	39.6 cm (15.6-inch), LED backlight, (Full HD), Anti-glare display, 1,920 x 1,080 pixel, 250cd
Aspect ratio	16:9
Brightness - typical	250cd
General system information	
Base unit	LIFEBOOK A3510

General system information

Max. resolution external display	1,920 x 1,080 pixel
Graphics brand name	Intel® UHD Graphics
Graphics notes	Shared memory depending on main memory size

Interfaces

DC-in	1
Audio: line-in / line-out	1
Internal microphones	1x digital mic
USB 3.2 Gen 1 (5 Gbps) total	3x Type-A (x1 with Anytime USB charge functionality)
USB 3.2 Gen 2 (10 Gbps) total	1x Type-C
USB Type-C	Alternate Mode (Display-Port Tunnel & Power Delivery)
HDMI	1 v1.4a
Ethernet (RJ-45)	1
Memory card slots	1 SD/SDHC/SDXC
Kensington Lock support	1

Keyboard and pointing devices

Keyboard w/o touchstick (spill-resistant)
Number of keyboard keys: 105, Keyboard pitch: 18.4 mm, Keyboard stroke: 1.7 mm
Power Button
Touchpad with two mouse buttons

Wireless technologies

Antennas	WLAN x2
Bluetooth	v5.0
Integrated WLAN	Intel® Dual Band Wireless-AC9560 11ac with integrated Bluetooth 5.0
WLAN encryption	WEP, WPA, WPA2
WLAN notes	Import and usage according to country-specific regulations.
WiDi support	Yes (with Intel W-LAN)

Power supply

Rated voltage range	100 V - 240 V (AC Input)
Rated frequency range	50 Hz - 60 Hz
1st battery	Li-Ion battery 3-cell, 4200 mAh / 45 Wh
Battery notes	Battery life may vary depending on product model, configuration, applications, power management settings and features utilized. Battery recharge time depends on usage.

Dimensions / Weight / Environmental

Dimensions (W x D x H)	361 x 244 x 23.9 mm 14.21 x 9.6 x 0.94 inch
Weight	1.95 kg
Weight (lbs)	4.29 lbs
Weight notes	Weight may vary depending on actual configuration
Operating ambient temperature	5 - 35 °C
Operating relative humidity	20 - 85% (relative humidity)
Temperature and humidity notes	Temperature Packed : -15 to 60 C, Humidity Packed : 20 to 80% RH

Compliance

Product	LIFEBOOK A3510
Model	Model A3510
Europe	CE in progress
Global	ENERGY STAR® in progress
Compliance link	https://sp.ts.fujitsu.com/sites/certificates

Application software

Additional software (included as a CD/DVD) Drivers & Utilities DVD (DUDVD)

Manageability

Manageability technology PXE 2.1 Boot code

Security

Physical Security Kensington Lock support

System and BIOS Security TPM 2.0 functionality (Intel® Platform Trust Technology)

User Security User and supervisor BIOS password

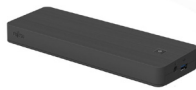
Warranty

Warranty Terms & Conditions <http://www.fujitsu.com/warranty>

Product Support Services - the perfect extension

Service Weblink <http://www.fujitsu.com/emeia/products/product-support-services/>

Recommended Accessories

USB Type-C Port Replicator 2

Connect to your peripherals. Adapt to the task on demand. The universal USB Type-C connection helps you to get your peripheral devices connected easily. Enhance your USB connection options, connect your displays via HDMI, DisplayPort or VGA and charge your device without an additional charger.

Order Code:
S26391-F3327-L100

Car/Air DC Mini Adapter 80

Frequent travelers need to charge their mobile devices anywhere. The FUJITSU Car/Air DC Mini Adapter 80 doesn't add anything to your luggage weight, since it is one of the world's smallest adapters. Whether in a car or in a plane: charge your mobile system or phone with one device only.

Order Code:
S26391-F2613-L616

Prestige Backpack 16

The FUJITSU Prestige Backpack 16 protects notebooks with up to 16-inch displays. It contains one large main compartments, two elastic mesh side pocket and three front bays with zipper. The padded back compartment provides protection for your notebook, while the other sections store power adaptors and office supplies. Padded shoulder straps and back cushions provide comfort on the move.

Order Code:
S26391-F1194-L137

Wireless Mouse W1210

The Wireless Mouse W1210 uses wireless 2.4 GHz technology and a high-resolution 1600 dpi optical sensor to give you the precision and reliability you need. Work comfortably and no nervous clicking noise thanks to the silent switch. Coming in a compact design with a stylish black finish, the W1210 wireless mouse is well suited to all environments and to each user whether right or left handed.

Order Code:
S26381-K472-L100

More information

Fujitsu OPTIMIZATION Services

In addition to FUJITSU Notebook LIFEBOOK A3510, Fujitsu provides a range of platform solutions. They combine reliable Fujitsu products with the best in services, know-how and worldwide partnerships.

Fujitsu Portfolio

Build on industry standards, Fujitsu offers a full portfolio of IT hardware and software products, services, solutions and cloud offering, ranging from clients to datacenter solutions and includes the broad stack of Business Solutions, as well as the full stack of Cloud offering. This allows customers to leverage from alternative sourcing and delivery models to increase their business agility and to improve their IT operation's reliability.

Computing Products

www.fujitsu.com/global/products/computing/

Software

www.fujitsu.com/software/

More information

Learn more about FUJITSU Notebook LIFEBOOK A3510, please contact your Fujitsu sales representative or Fujitsu Business partner, or visit our website. www.fujitsu.com/emeia/products/computing/pc/notebooks/index.html

Fujitsu green policy innovation

Fujitsu Green Policy Innovation is our worldwide project for reducing burdens on the environment.

Using our global know-how, we aim to contribute to the creation of a sustainable environment for future generations through IT. Please find further information at <http://www.fujitsu.com/global/about/environment/>



Copyrights

All rights reserved, including intellectual property rights. Changes to technical data reserved. Delivery subject to availability. Designations may be trademarks and/or copyrights of the respective manufacturer, the use of which by third parties for their own purposes may infringe the rights of such owner. For further information see <http://www.fujitsu.com/emeia/resources/navigation/terms-of-use.html>
Copyright 2020 Fujitsu Technology Solutions GmbH

Disclaimer

Technical data are subject to modification and delivery subject to availability. Any liability that the data and illustrations are complete, actual or correct is excluded. Designations may be trademarks and/or copyrights of the respective manufacturer, the use of which by third parties for their own purposes may infringe the rights of such owner.

CONTACT

Fujitsu Technology Solutions GmbH
Website: www.fujitsu.com
2020-10-09 EM-EN

All rights reserved, including intellectual property rights. Changes to technical data reserved. Delivery subject to availability. Designations may be trademarks and/or copyrights of the respective manufacturer, the use of which by third parties for their own purposes may infringe the rights of such owner. For further information see <http://www.fujitsu.com/emeia/resources/navigation/terms-of-use.html>
Copyright 2020 Fujitsu Technology Solutions GmbH